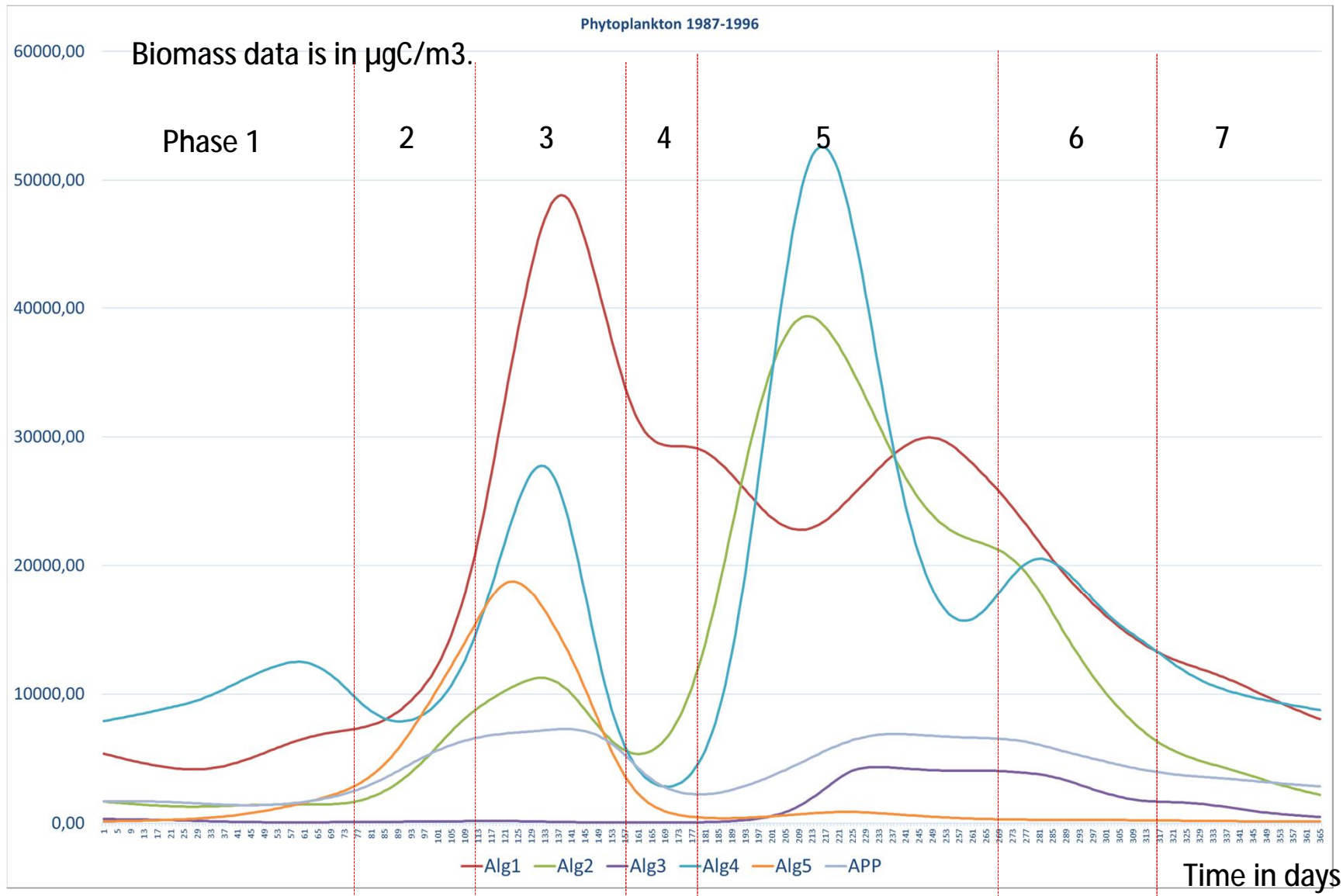
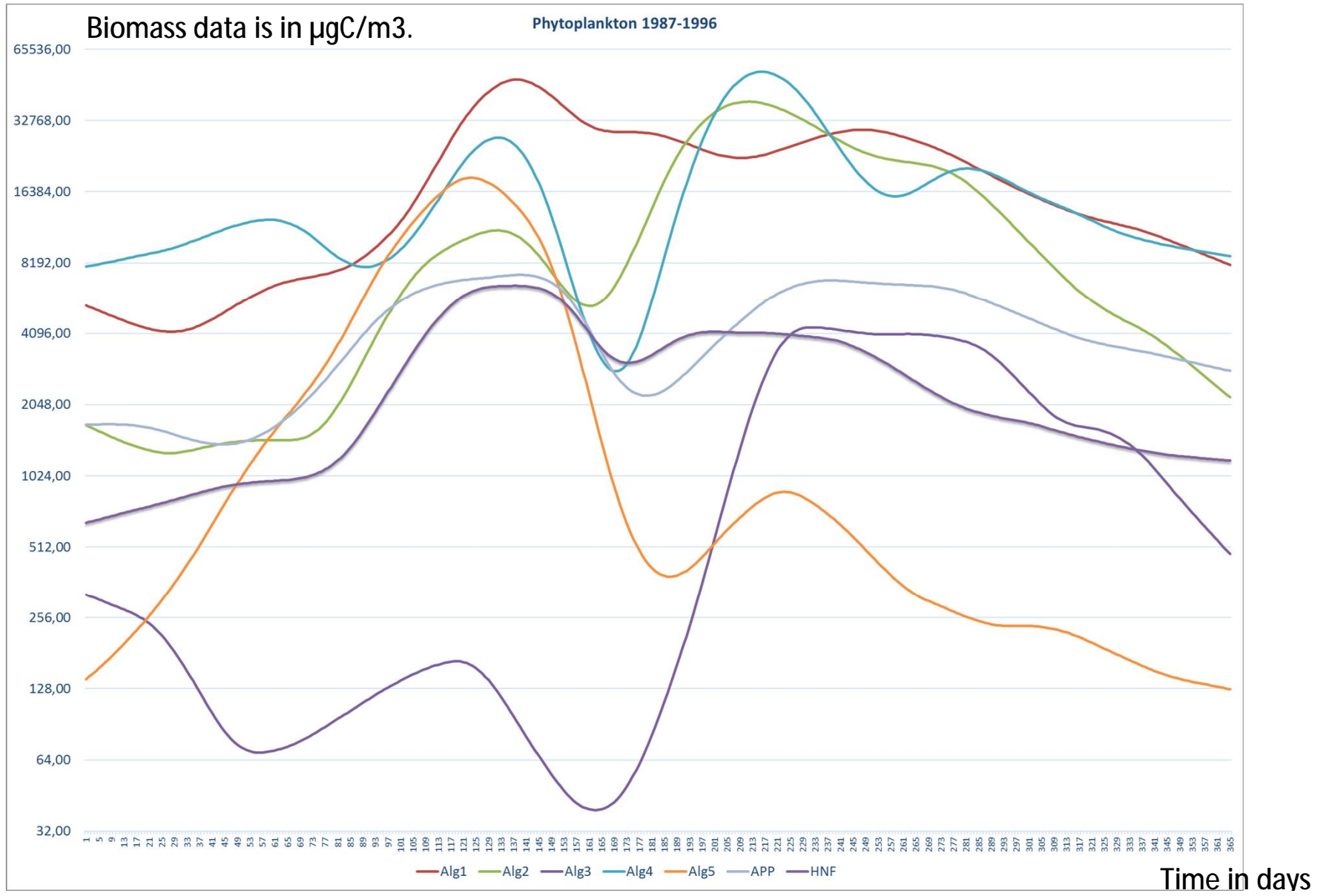
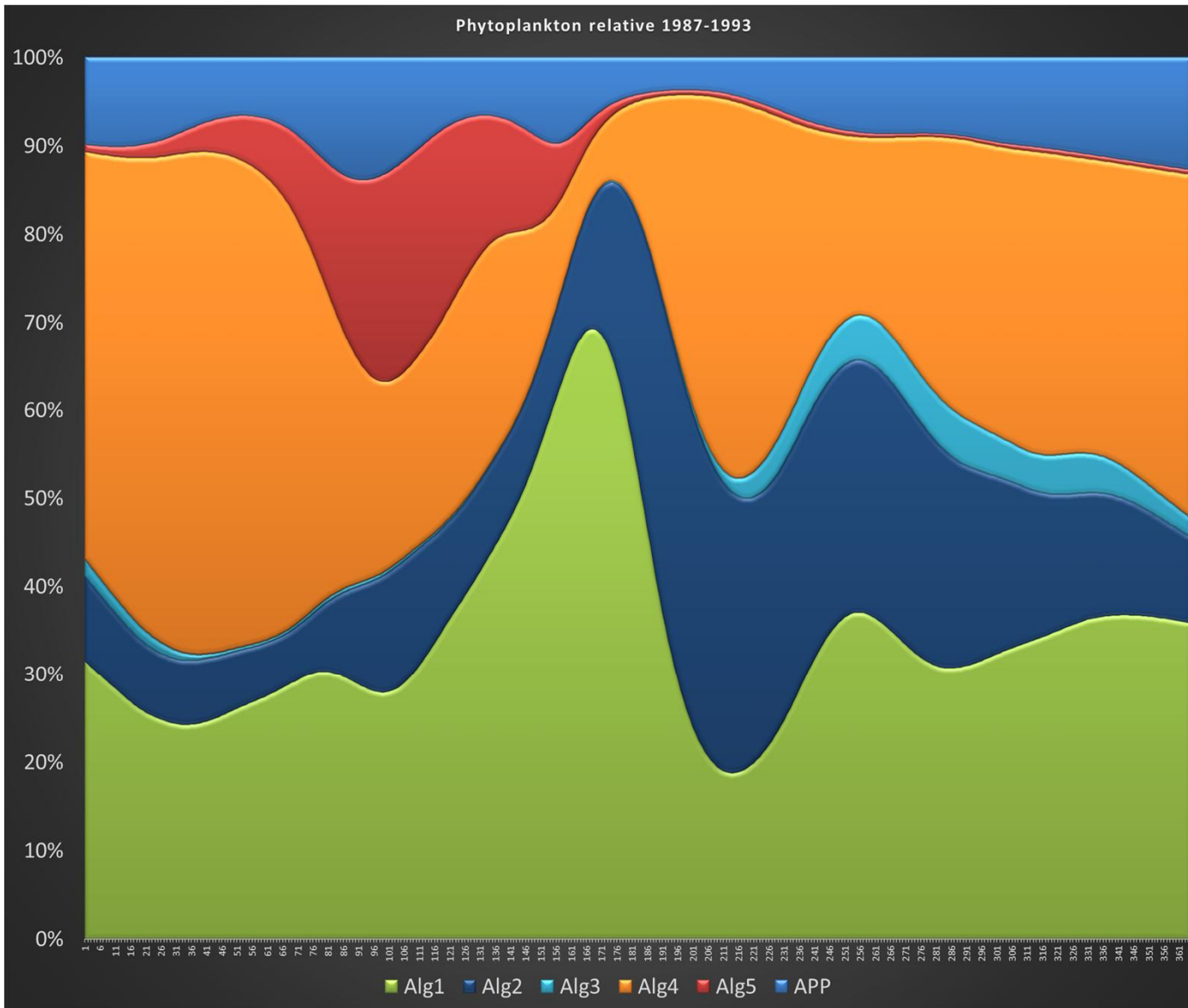


Gemittelter Zeitraum

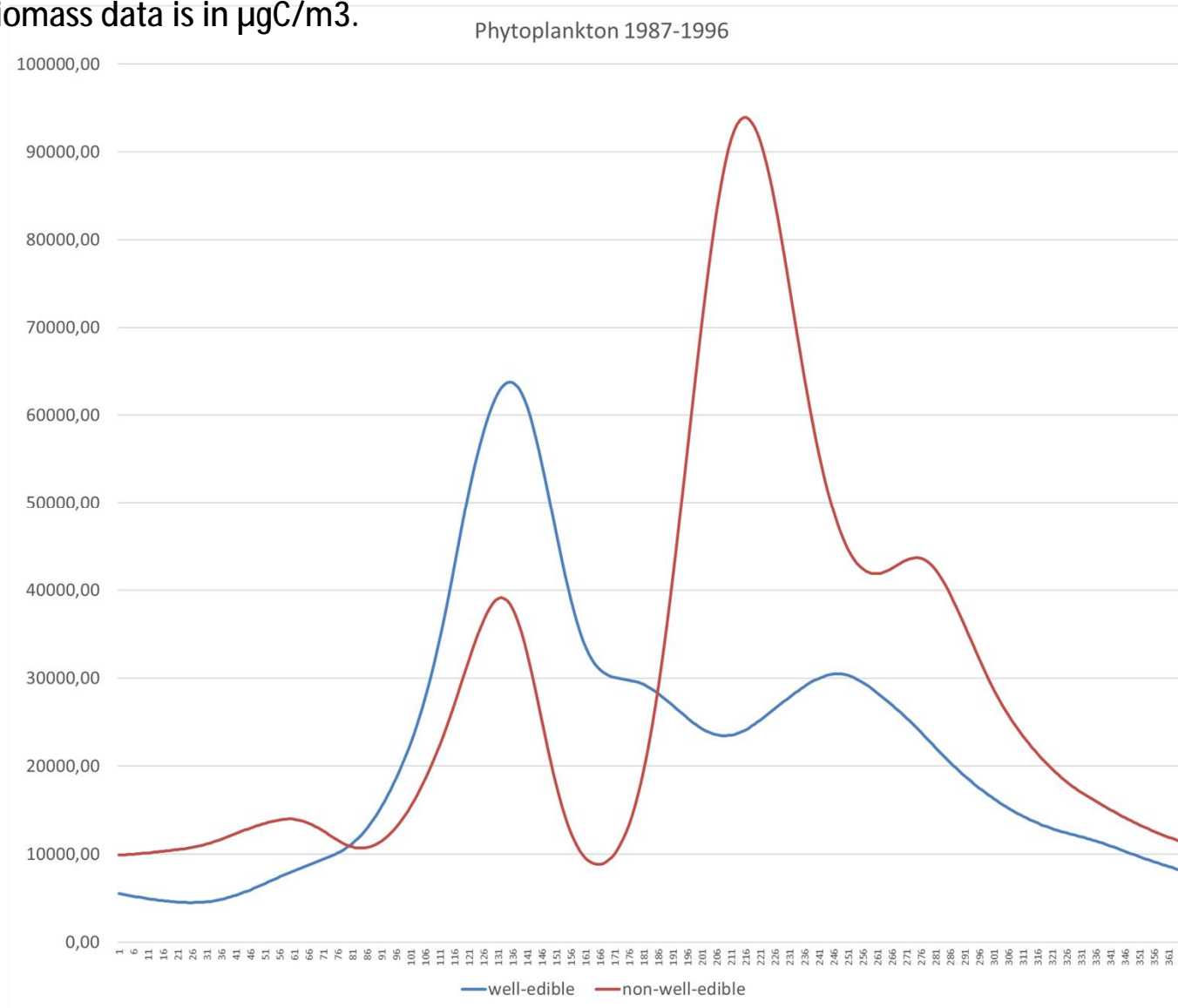
1987 bis 1996





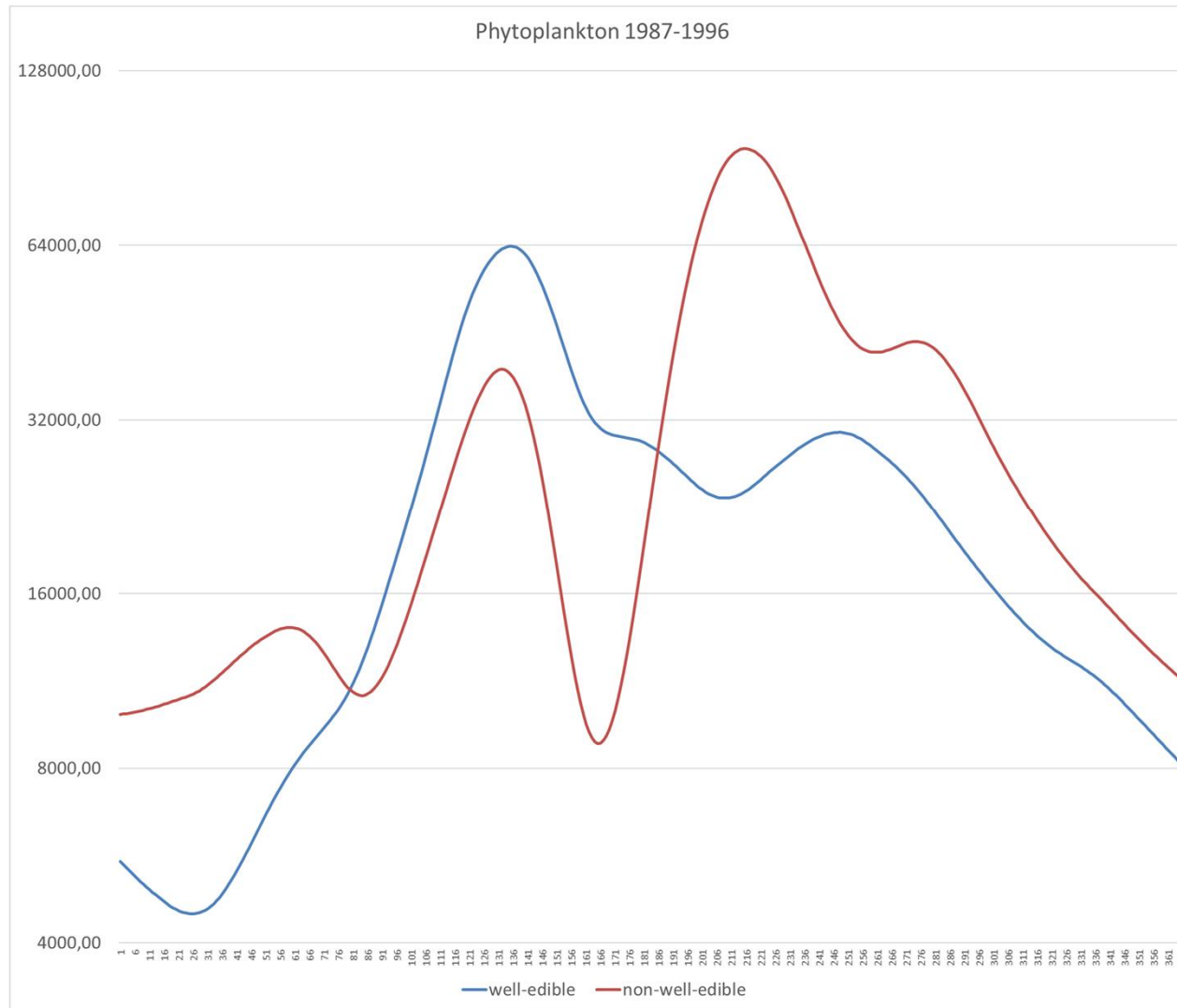


Biomass data is in $\mu\text{gC}/\text{m}^3$.



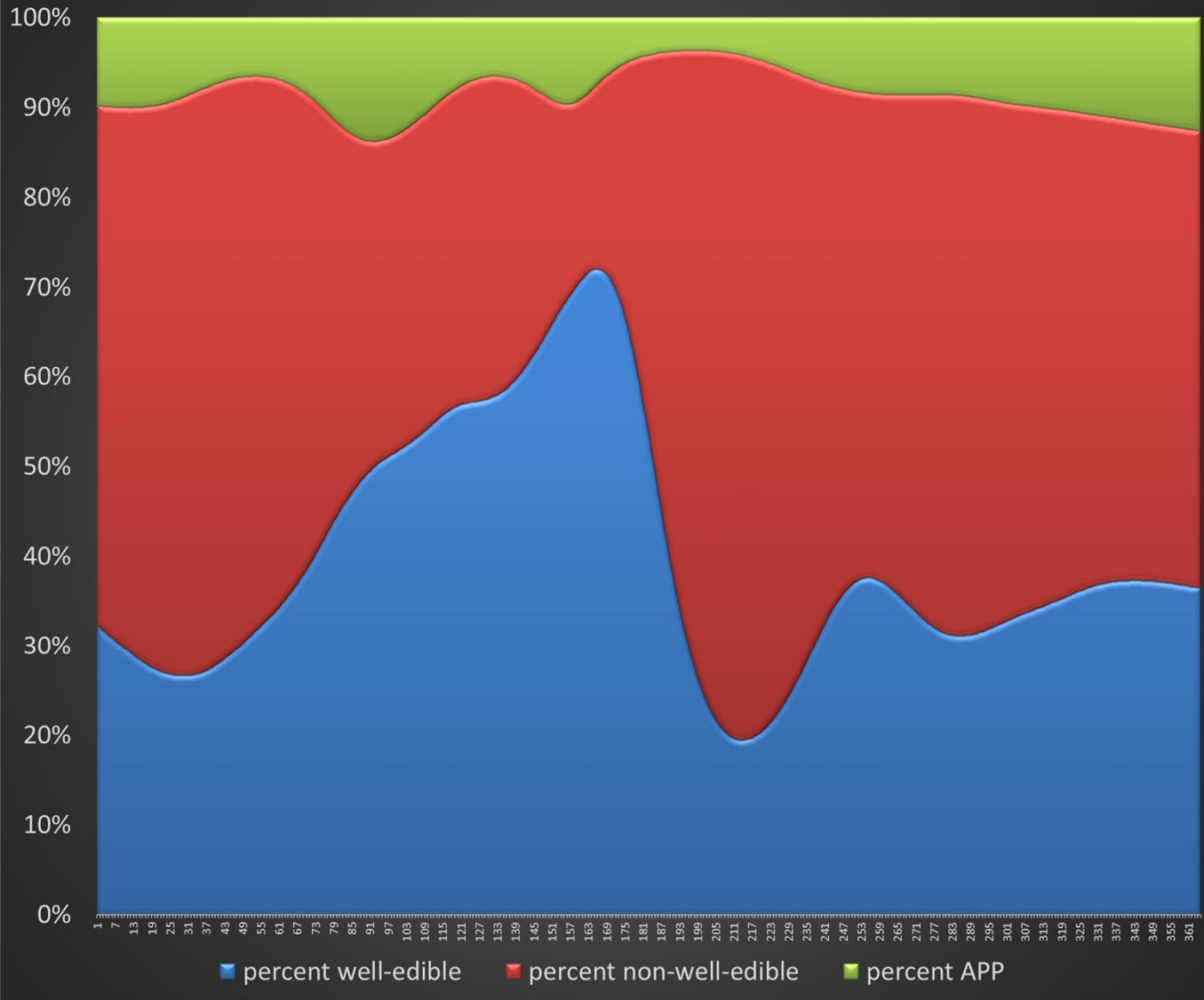
Time in days

Biomass data is in $\mu\text{gC}/\text{m}^3$.



Time in days

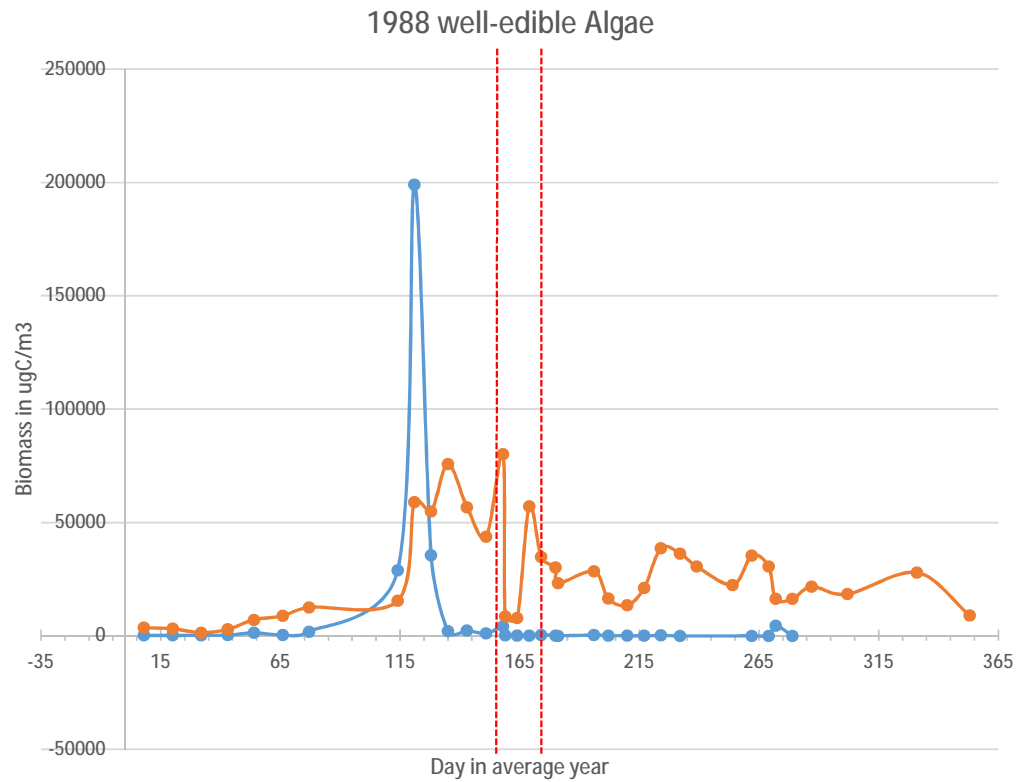
Stacked relative plot Phytoplankton 1987-1996



Einzelne Jahre

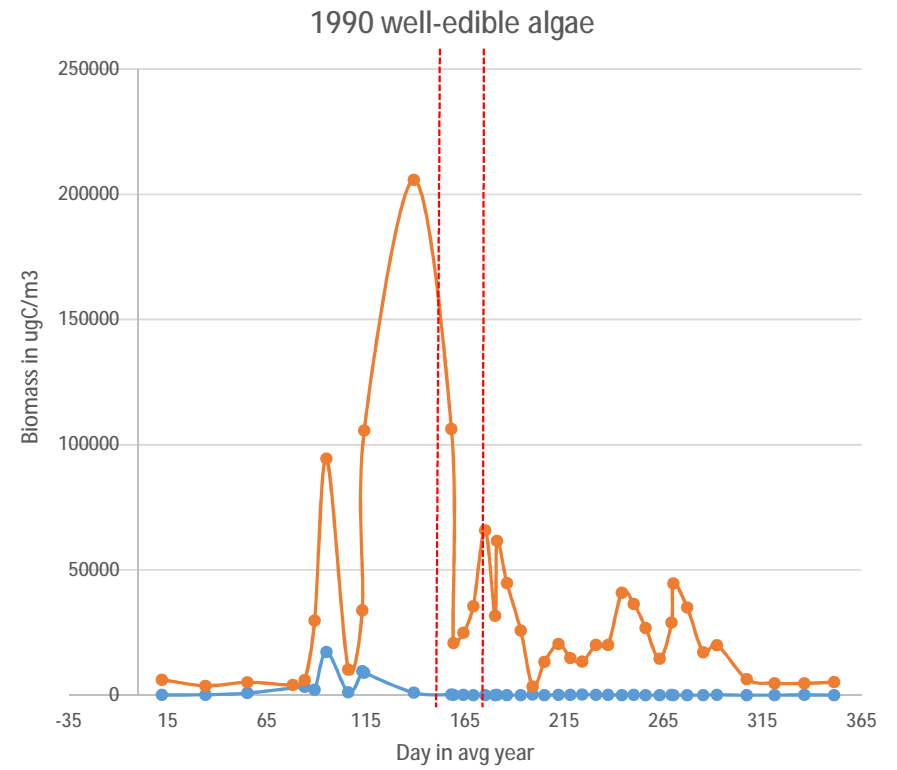
1988 und 1990

Biomass data is in $\mu\text{gC}/\text{m}^3$.



—●— Alg 5 —●— Alg 1

----- Lage des Klarwasserstadiums

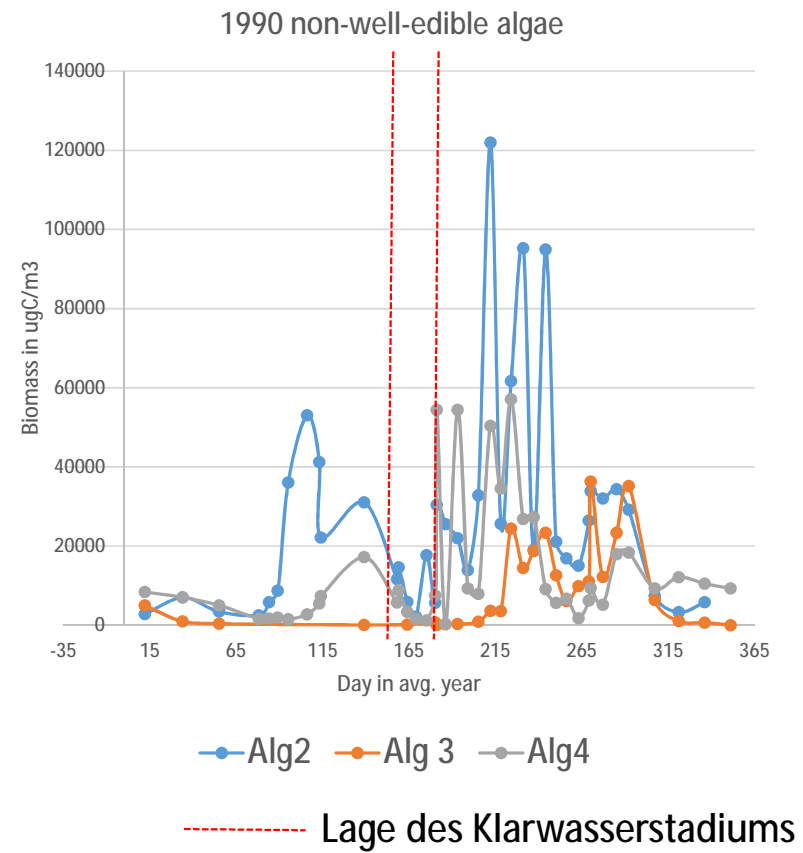
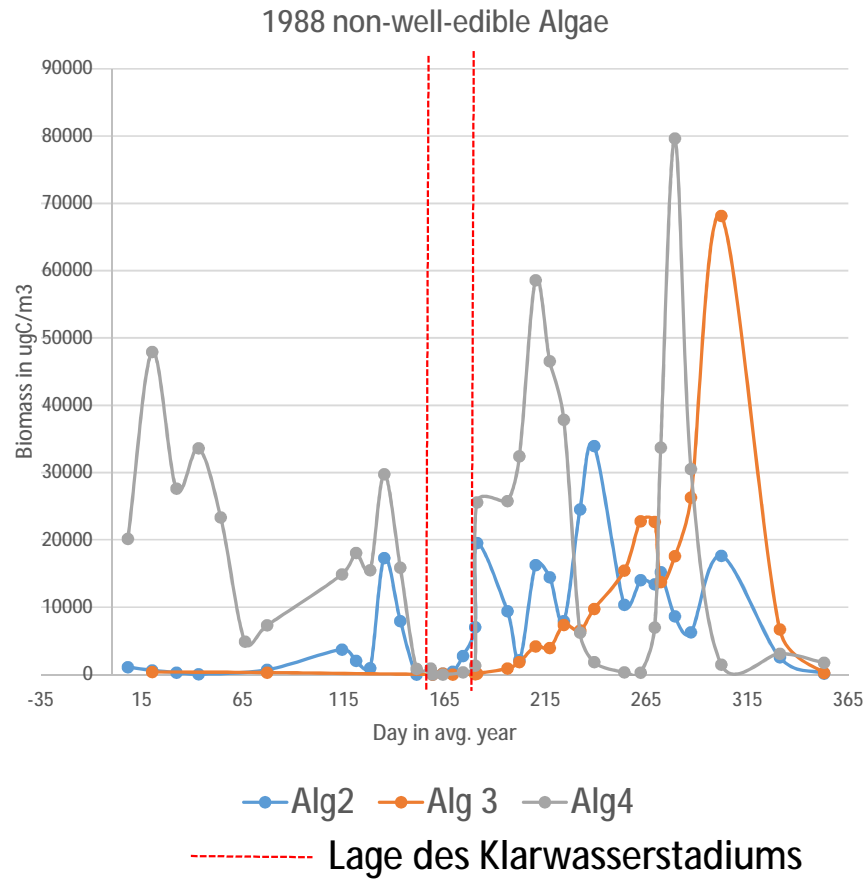


—●— Alg 5 —●— Alg 1

----- Lage des Klarwasserstadiums

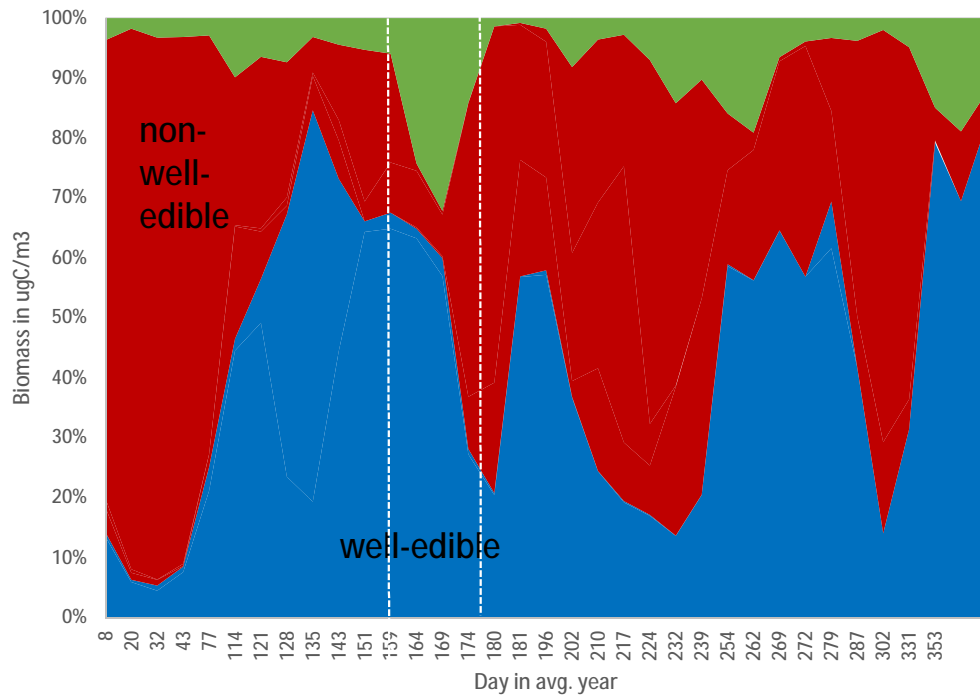
Time in days

Biomass data is in $\mu\text{gC}/\text{m}^3$.



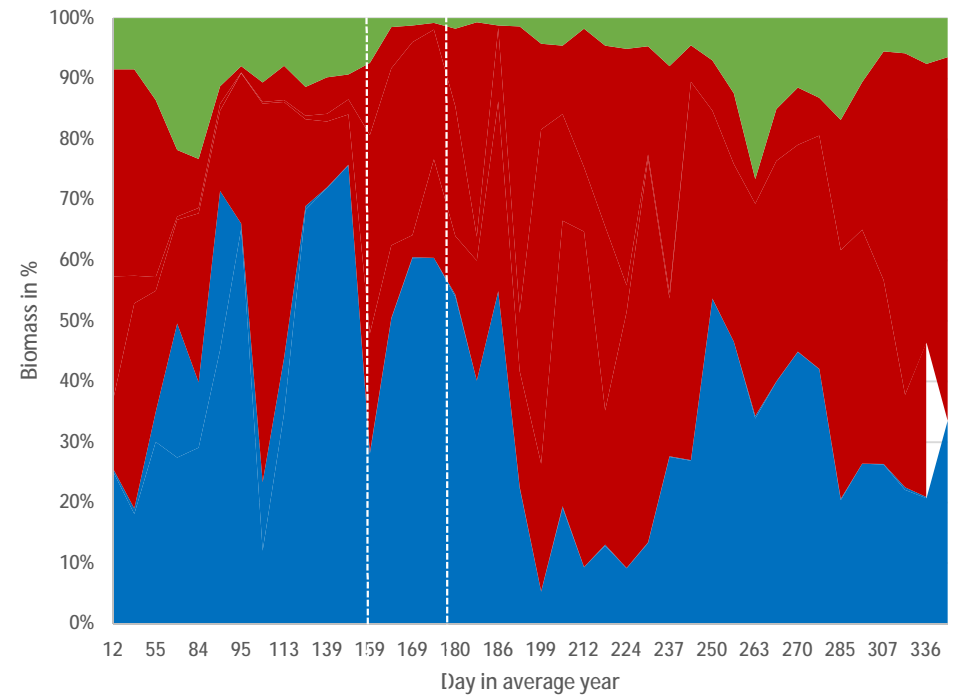
Time in days

1988 percent of total phytoplankton



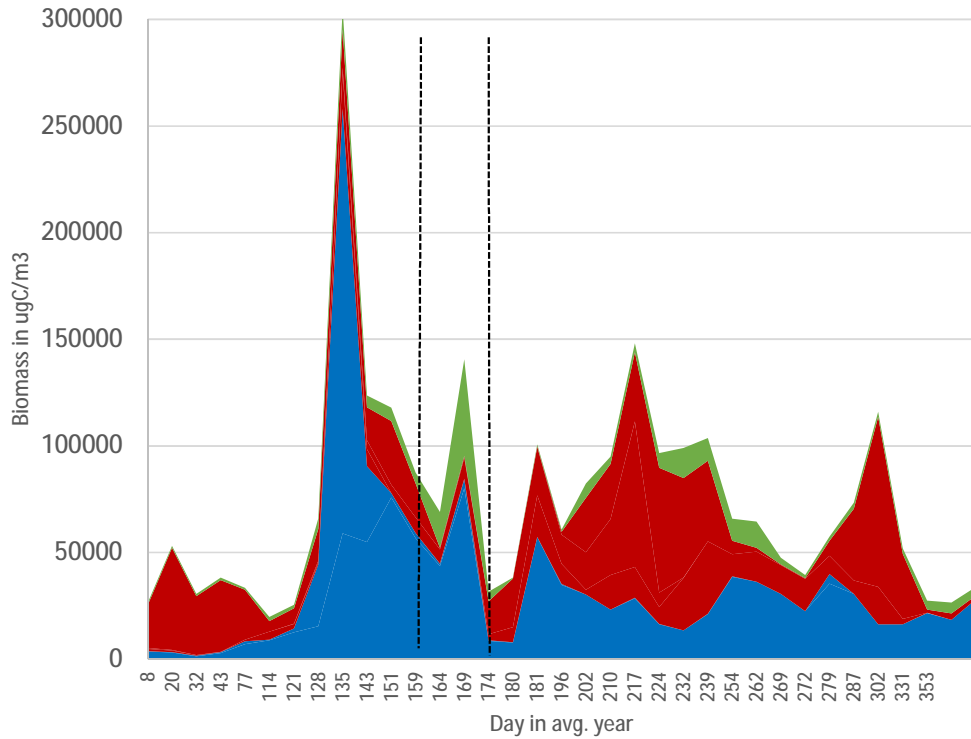
- Alg1
- Alg 5
- Alg2
- Alg 3
- Alg4
- APP

1990 percent of total phytoplankton



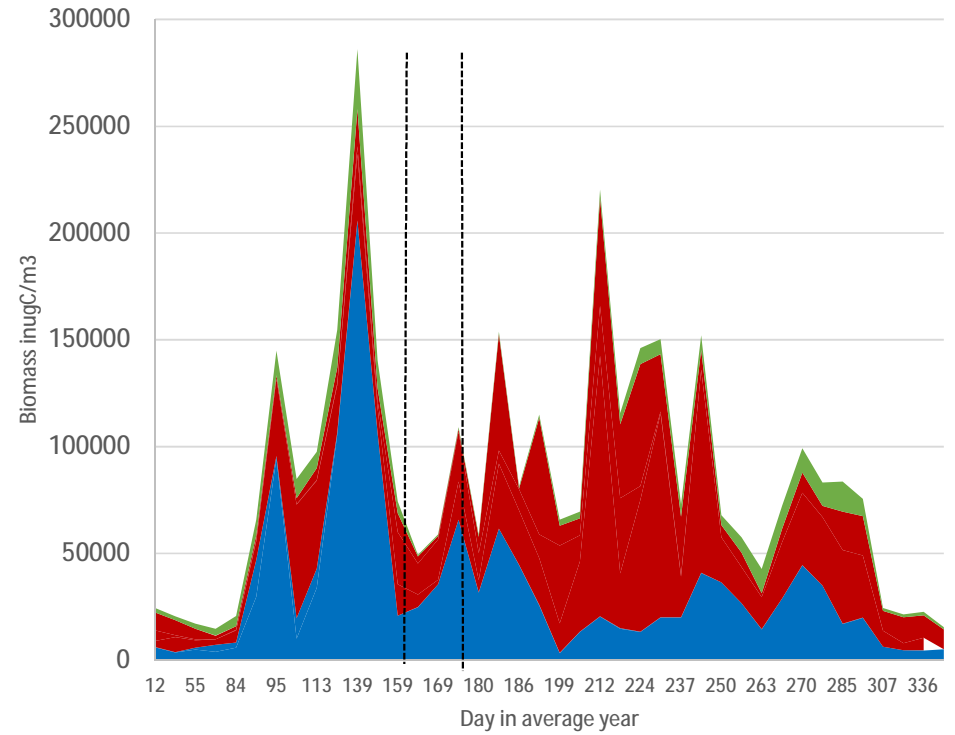
- Alg1
- Alg 5
- Alg2
- Alg 3
- Alg4
- APP

1988 percent of total phytoplankton



■ Alg1 ■ Alg 5 ■ Alg2 ■ Alg 3 ■ Alg4 ■ APP
well-edible non-well-edible

1990 stacked plot of total phytoplankton



■ Alg1 ■ Alg 5 ■ Alg2 ■ Alg 3 ■ Alg4 ■ APP
well-edible non-well-edible