

Metadata

Stechlin dissolved oxygen measurements

Three moorings were deployed at 45, 50, and 55 m lake depth with loggers placed in close proximity to the bottom. Measurements were performed from late summer to early autumn or late winter, from July 19 to December 12 in 2023 and from July 23 to November 13 in 2024. Mooring locations are shown in Figure 1. Logger positions above the sediment are displayed in Figure 2.

PME Minidots were used (temperature accuracy: ± 0.1 degrees C; dissolved oxygen accuracy: $\pm 5\%$ of the measurement or ± 0.3 mg/L, whichever is larger; response time ~ 30 seconds). Data were stored as text files as listed in Table 1 and 2.

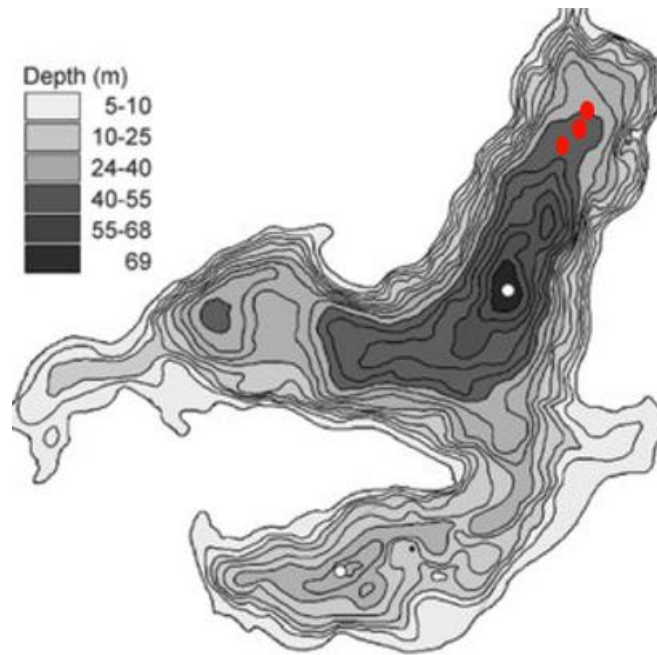


Figure 1: Mooring locations.

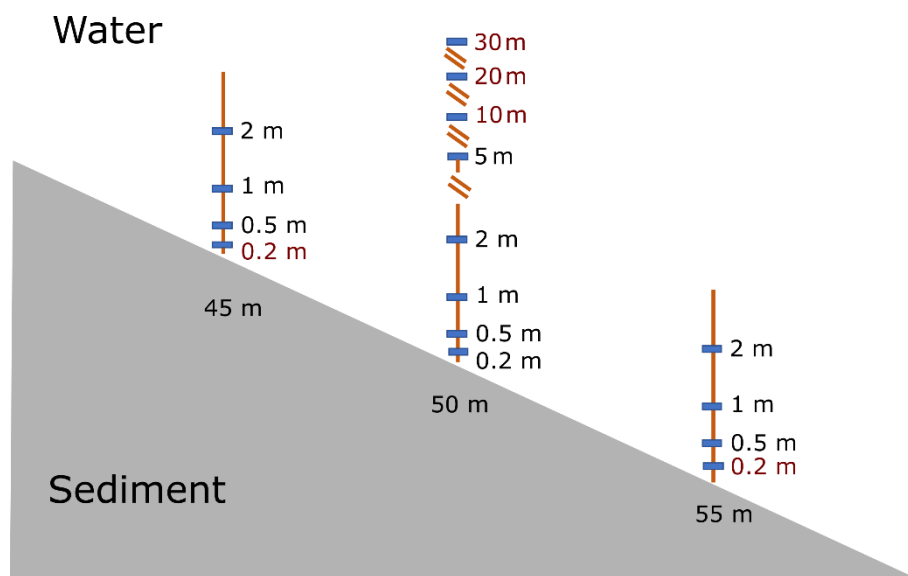


Figure 2: Mooring configuration. Logger displayed in black were deployed in 2023 and 2024, logger displayed in red were only deployed in 2024.

File Name	Depth of Mooring [m]	Height above bottom [m]	Resolution [min]
STE_45m_0.5m_miniDot7450-149656.TXT	45	0.5	5
STE_45m_1m_miniDot7450-871417.TXT	45	1	5
STE_45m_2m_miniDot7392-373091.TXT	45	2	5
STE_50m_0.2m_miniDot7392-186076.TXT	50	0.2	5
STE_50m_0.5m_miniDot7450-888385.TXT	50	0.5	5
STE_50m_1m_miniDot7450-871417.TXT	50	1	5
STE_50m_2m_miniDot7450-609525.TXT	50	2	5
STE_55m_0.5m_miniDot7450-572641.TXT	55	0.5	5
STE_55m_1m_miniDot7450-104785.TXT	55	1	5
STE_55m_2m_miniDot7450-037508.TXT	55	2	5

File Name	Depth of Mooring [m]	Height above bottom [m]	Resolution [min]
STE_2024_45-0.2_7392-218690.TXT	45	0.2	30
STE_2024_45-0.5_7450-844571.TXT	45	0.5	30
STE_2024_45-1_7450-104785.TXT	45	1	30
STE_2024_45-2_7450-582476.TXT	45	2	30
STE_2024_50-0.2_7450-527836.TXT	50	0.2	30
STE_2024_50-0.5_7450-037508.TXT	50	0.5	30
STE_2024_50-1_7450-997425.TXT	50	1	30
STE_2024_50-2_7450-810860.TXT	50	2	30
STE_2024_50-5_7450-734284.TXT	50	5	30
STE_2024_50-10_7450-355940.TXT	50	10	30
STE_2024_50-20_7450-171292.TXT	50	20	30
STE_2024_50-30_7450-247338.TXT	50	30	30
STE_2024_55-0.2_7450-943177.TXT	55	0.2	30
STE_2024_55-0.5_7450-678611.TXT	55	0.5	30
STE_2024_55-1_7450-607117.TXT	55	1	30
STE_2024_55-2_7450-848359.TXT	55	2	30